



CED^R
Centre d'Estudis
Demogràfics

WELCOME



**A GUIDE FOR YOUR
ARRIVAL AT THE CED**

A FEW WORDS OF GREETING AND WELCOME



“Welcome to the Centre for Demographic Studies (CED), a demographic training and research centre located in an ideal setting, 25 minutes by public transport from the centre of Barcelona in the UAB campus whose facilities the CED enjoys.

In this guide you will find useful information to help you to get to know our Centre and its surrounds during the first days of your stay. I hope it will also be useful when you are dealing with the administrative procedures required by your stay.

The CED is a research centre with a pleasant family atmosphere where you will find assistance provided by the research support staff and other researchers.”

Albert Esteve Palós

Director of the CED

WHO WE ARE //

- 01** A FEW WORDS OF GREETING AND WELCOME
- 02** A BRIEF HISTORY OF THE CED
- 03** ORGANIGRAM AND GOVERNING BODIES
- 04** WHO WILL RECEIVE YOU WHEN YOU ARRIVE AT THE CED?

WHAT WE DO //

- 05** AREAS AND LINES OF RESEARCH
- 07** DATABASES LIBRARY TRAINING

PRACTICAL INFORMATION //

- 08** WHAT PROCEDURES ARE NECESSARY FOR STARTING YOUR STAY AT THE CED?
- 10** YOUR PLACE OF WORK
- 11** THE KITCHEN, PRINTERS AND PHONE CALLS
- 12** MEDICAL CHECK-UPS, ACCOMMODATION AND PHYSICAL ACTIVITY
- 13** WORKING HOURS
- 14** SERVICES AND EQUIPMENT

A BRIEF HISTORY OF THE CED

- 1984** Creation of the Centre for Demographic Studies. Headquarters in Barcelona.
- 1985** First Population Seminar.
- 1987** Move to the new location on the UAB campus. Spanish-Portuguese-Italian Congress on Historical Demography held in Barcelona.
- 1988** First year of postgraduate course in Methods and Techniques for Population Study.
- 1993** *IUSSP Workshop in Barcelona on Key Factors of World Population.*
- 1994** Beginning of PhD in Demography. New building of 1,200 m² in the UAB campus.
- 1995** First Consolidated Research Group on *Historical Studies of the Population of Catalonia* (GEHPC) headed by Anna Cabré.
- 1996** Start of the ALFAPOP programme.
- 2000** First thesis defence of the PhD in Demography programme.
- 2003** Award of St. George Cross (Creu de Sant Jordi) by the Generalitat (Government) of Catalonia to Anna Cabré (2005).
- 2004** Quality Mention awarded to PhD in Demography programme.
- 2005** Second Consolidated Research group, *Group for Demographic and Migration Studies* (GEDEM) headed by Andreu Domingo i Valls.
- 2006** Start of the master's degree in Regional and Population Studies (Demography stream).
- 2007** First year of the European Doctoral School of Demography (EDSD). Headquarters at the CED in the 2011-12 and 2012-13 academic years.
- 2008** EAPS European Population Conference: "Migration and Migrants in Europe", in Barcelona.
- 2009** Third Consolidated Research *Group on Demography and Families* (DEMFAMS), headed by Albert Esteve i Palós.
First project of Starting Grant (ERC): *Towards a Unified Analysis of World Population: Family Patterns in Multilevel Perspective (WORLD FAM)*, headed by Albert Esteve Palós.
- 2010** First project of Advanced Grant (ERC): *Five Centuries of Marriages (5CofM)*, headed by Anna Cabré.
- 2014** CED 30th anniversary celebrations.
- 2015** New CED director: Albert Esteve i Palós.
- 2016** New corporate image.
- 2017** Awarded an A in the CERCA research centres audit.
- 2020** First project Consolidator (ERC): *Healthy lifespan inequality: Measurement, trends and determinantse (HEALIN)*, Iñaki Permanyer Ugartemendia.
- 2021** First ICREA researcher at the CED, Iñaki Permanyer Ugartemendia.

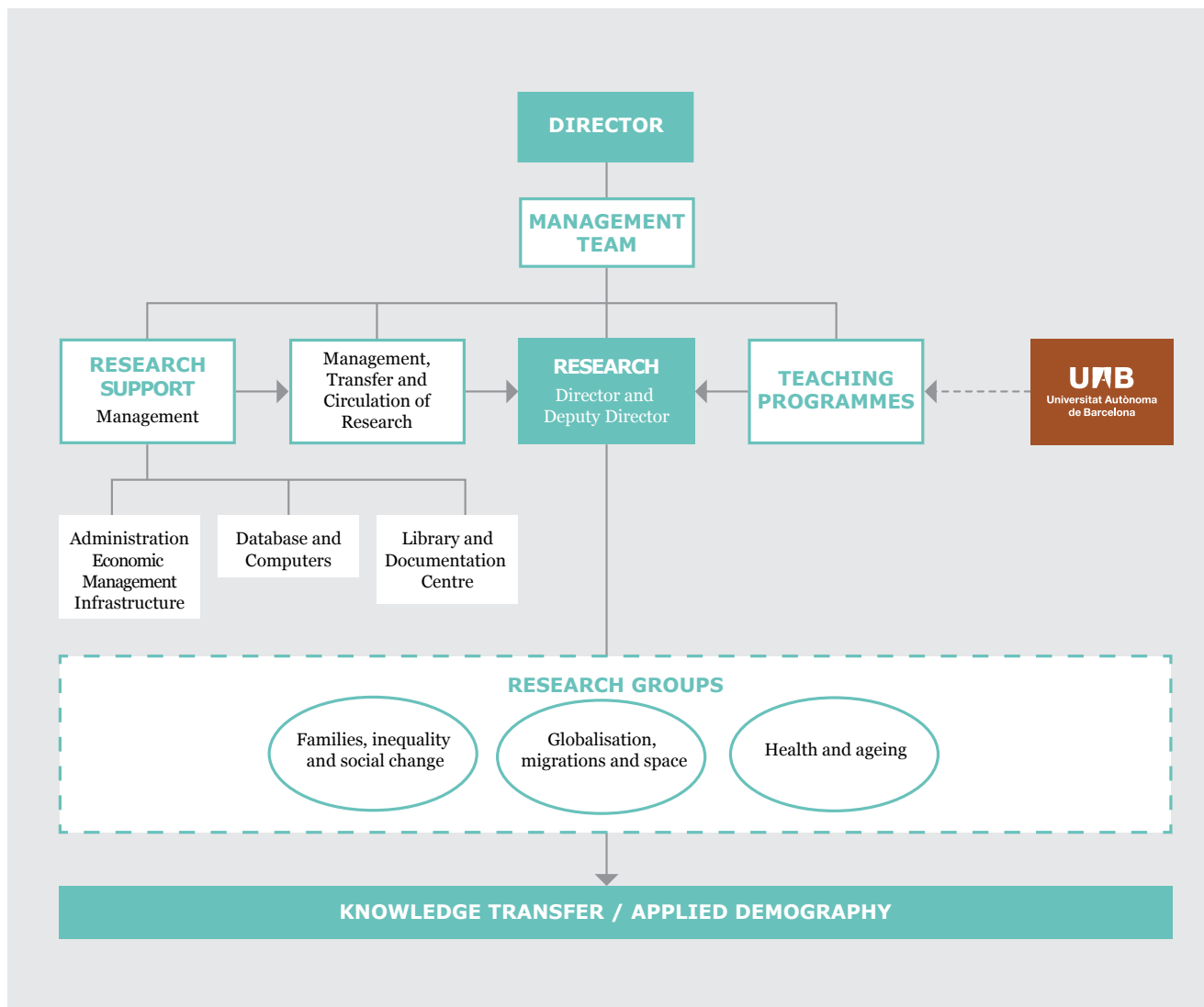


Anna Cabré, director of the CED from 1984 to 2015 and present honorary director.



The first CED premises were in this old palace in carrer Pomaret, Barcelona.

ORGANIGRAM AND GOVERNING BODIES



Albert Esteve Palós
Director of the CED



Andreu Domingo Valls
Deputy-Director of the CED



Hermínia Pujol Estragués
Manager of the CED

WHO WILL RECEIVE YOU WHEN YOU ARRIVE AT THE CED?



Ruth Pastor LLaudet

At the entrance of the CED you will find the CED Secretariat staffed by Ruth Pastor.

📍 *Secretary's Office (Floor 0)*

☎ +34 93 581 30 60 (226)

✉ ruth@ced.uab.es



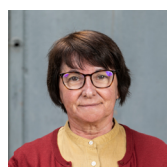
Eulàlia Camps Vidal

If you wish to carry out a research stay, Eulàlia Camps will assist you.

📍 *Office E2/105 (Floor 1)*

☎ +34 93 581 30 60 (229)

✉ ecamps@ced.uab.es



Soco Sancho Valverde

If you are a student of any of the CED or UAB teaching programs, Soco Sancho will assist you.

📍 *Office E2/111 (Floor 0)*

☎ +34 93 581 30 60 (224)

✉ ssancho@ced.uab.es



Xavi Ruiz Vilchez

For issues related to your computer, printer connection, internet connection or email, you have the support of Xavier Ruiz.

📍 *Office E2/-111 (Floor -1)*

☎ +34 93 581 30 60 (213)

✉ xruiz@ced.uab.es



Inés Brancós Coll

If you apply to competitive calls at the state level, Inés Brancós will attend you.

📍 *Office E2/007 (Floor 0)*

☎ +34 93 581 30 60 (220)

✉ ibrancos@ced.uab.es



Teresa Antònia Cusidó Vallverdú

If you apply to competitive international calls, Teresa Antònia Cusidó will attend you.

📍 *Office E2/219 (Floor 2)*

☎ +34 93 581 30 60 (252)

✉ tacusido@ced.uab.es

GROUPS AND LINES OF RESEARCH

Research at the CED is structured into 3 groups of demographic research and 1 area of applied demography. Each group covers several lines of research. Each line has a chief researcher, researchers, research staff trainees, and research back-up staff.

The CED's groups and lines of research are headed by the following staff members:

FAMILIES, INEQUALITY AND SOCIAL CHANGE

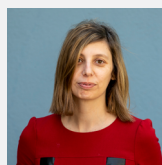
FERTILITY AND HOUSEHOLDS



Albert Esteve Palós

☎ +34 93 581 30 60 (229)
✉ aesteve@ced.uab.es

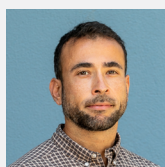
HISTORICAL DEMOGRAPHY



Joana M. Pujadas Mora

☎ +34 93 581 30 60 (239)
✉ jpujades@ced.uab.es

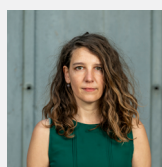
GENERATIONS AND LIFE COURSE



Sergi Vidal

☎ +34 93 581 30 60 (236)
✉ svidal@ced.uab.es

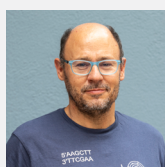
POVERTY, CHILDHOOD AND FAMILIES



Alba Lanau

☎ +34 93 581 30 60 (236)
✉ alanau@ced.uab.es

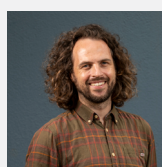
EDUCATION AND WORK



Pau Miret Gamundi

☎ +34 93 581 30 60 (228)
✉ pmiret@ced.uab.es

SOCIAL STRATIFICATION



Diederik Boertien

☎ +34 93 581 30 60 (238)
✉ dboertien@ced.uab.es

GENDER AND INEQUALITY



Mariona Lozano

☎ +34 93 581 30 60 (243)
✉ mlozano@ced.uab.es



Montse Solsona

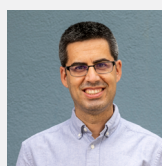
☎ +34 93 581 30 60 (219)
✉ msolsona@ced.uab.es

TIME USE



Marc Ajenjo

☎ +34 93 581 30 60 (235)
✉ majenjo@ced.uab.es



Joan Garcia

☎ +34 93 581 30 60 (248)
✉ jgarcia@ced.uab.es

GROUPS AND LINES OF RESEARCH

GLOBALISATION, MIGRATIONS AND SPACE

MIGRACIONES E INTERCULTURALIDAD



Andreu Domingo Valls

☎ +34 93 581 30 60 (231)

✉ adomingo@ced.uab.es

INTERNATIONAL IMMIGRATION AND TERRITORY



Jordi Bayona

☎ +34 93 581 30 60 (232)

✉ jbayona@ced.uab.es

INTERNAL MIGRATIONS, SPATIAL LOCALISATION OF THE POPULATION, AND RURAL DEPOPULATION

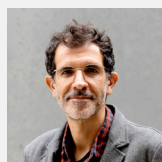


Joaquín Recaño Valverde

☎ +34 93 581 30 60 (234)

✉ jrecano@ced.uab.es

URBAN CHANGE AND RESIDENTIAL MOBILITY



Antonio López-Gay

☎ +34 93 581 30 60 (240)

✉ tlopez@ced.uab.es

HOUSING DEMOGRAPHICS



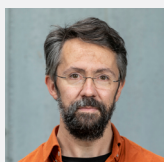
Juan Antonio Módenes Cabrerizo

☎ +34 93 581 30 60 (217)

✉ jamodenes@ced.uab.es

HEALTH AND AGEING

HEALTH INEQUALITIES



Iñaki Permanyer Ugartemendia

☎ +34 93 581 30 60 (244)

✉ ipermanyer@ced.uab.es

ELDERLY CARE



Jeroen Spijker

☎ +34 93 581 30 60 (218)

✉ jspijker@ced.uab.es

HEALTH, MORTALITY AND CAUSES OF DEATH



Amand Blanes Llorens

☎ +34 93 581 30 60 (241)

✉ ablanes@ced.uab.es

AGEING AND SOCIETY



Elisenda Rentería

☎ +34 93 581 30 60 (251)

✉ erenteria@ced.uab.es

DATABASES, LIBRARY AND TRAINING

DATABASES

For any matters related with databases and population surveys, please contact:



Teresa Menacho Montes

Head of databases and computerised material

📍 *Office E2/201 Computer room (Floor 2)*

☎ *+34 93 581 30 60 (245)*

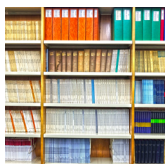
✉ *tmenacho@ced.uab.es*

All information pertaining to data privacy regulations and image rights may be found in the Procedure P03.3 referring to Data Protection of the CED's Quality System (Intranet of the CED/1. Quality System).

THE LIBRARY AND DOCUMENTATION SERVICE

This is the only library in Spain specialising in demography and population studies.

- Statistics on Spanish population since 1860
- 10,715 volumes in paper format
- 2 serial publications



Candi Abella Álvarez

Librarian

📍 *Floor -1*

☎ *+34 93 581 30 60 (216)*

✉ *cabella@ced.uab.es*

Public opening hours:

Monday to Thursday

9 a.m. to 2 p.m. and 3 p.m. to 7.30 p.m.

Friday

9 a.m. to 2 p.m. and 3 p.m. to 6 p.m.

SEMINARS AND CONFERENCES

The CED organises monthly research seminars and conferences for research staff and trainees.

The CED seminars and conferences also have the status of training activities for PhD candidates.

They are usually held on Thursdays at 12 noon in the assembly hall (Sala Àngels Torrents) at the CED.*

CONGRESSES AND EVENTS OUTSIDE THE CED

Research staff who wish to participate in congresses must request authorisation from the head of their research group and authorisation for funding from the CED manager by way of Form P11 1.1 007 – Authorisation of expenses (Intranet/1. Quality System /Procedure 11. Accounting Unit Management / Documents supporting the process).*

LANGUAGE COURSES

Intensive and extensive Catalan and Spanish language courses for beginners and at higher levels of proficiency are offered during the academic year at the UAB Languages Service, which is located on the campus.

Information about the Language Services courses available here:

🌐 [UAB Languages](#)

*SEE EXTRAORDINARY MEASURES IN THE COVID-19 CONTINGENCY PLAN

WHAT PROCEDURES ARE NECESSARY FOR STARTING YOUR STAY AT THE CED

BEFORE ARRIVING AT THE CED (LEGAL FORMALITIES IN YOUR COUNTRY OF ORIGIN)

It is necessary to apply for a visa in the Spanish embassy or consulate in the country of origin or legal residence, presenting documentation confirming acceptance of your visit and/or admission to the PhD in Demography programme. This is provided as required by both the CED and the UAB.

The Aliens Act is undergoing constant amendment and it is therefore very important that future visitors to the CED should, before arrival, contact Soco Sancho, head of Teaching and Training programmes, in order to be informed about possible changes in the law.

WHEN YOU ARRIVE AT THE CED (LEGAL PROCEDURES ON ARRIVAL)

1. PROCEDURES FOR EU RESEARCHERS OR STUDENTS

Research staff with European Union citizenship do not need to complete any administrative procedure before entering Spain.

If the stay is longer than three months, it is obligatory to request inscription in the Central Register of Foreign Nationals, which issues a Certificate of Registration and a NIE number (Foreigner's Identification Number).

You must register in person at a National Police station in your city of residence

 *Public administration*

THE DOCUMENTATION YOU WILL NEED TO PROVIDE IS THE FOLLOWING:

- 2 copies of the completed Register form (EX18).
- Valid passport or identity document of your country: original and photocopy

MEDICAL INSURANCE FOR EU STUDENTS AND/OR RESEARCHERS

If you are insured or have health cover from the public social security system in your country, you are entitled to a European Health Insurance Card (EHIC). Please bear in mind that the card does not cover private health care or repatriation costs.

After arrival, in order to obtain free health care, you must go to the public health care centre (CAP) closest to your home and present the EHIC, together with a document proving your identity (identity card or passport).

2. PROCEDURES FOR NON-EU RESEARCHERS OR STUDENTS

You will have a maximum time limit of 30 days within which to request authorisation for a study visit as of the date of entering the European Union. It is therefore essential to keep airline tickets (boarding card) or obtain a stamp confirming entry from Passport Control.

It is necessary to obtain the Foreign Resident's Identification Card (TIE). This is a card authorising a temporary visit and valid for the duration of a student's studies in Spain. Authorisation is granted for a maximum of one academic year and is renewable on an annual basis, as long as the stipulations of the law are observed. This document legalises the stay of students who intend to stay in Spain for six months or more, and who have previously completed procedures for an open study visa.

After entering the European Union students have a maximum period of 30 calendar days to request the TIE.

All documents must be presented in the official language (Spanish or Catalan). If this is not possible, duly authenticated documents will be accepted in other languages when presented with a certified translation.

 *UAB documentation*

WHAT PROCEDURES ARE NECESSARY FOR STARTING YOUR STAY AT THE CED?

WORK PERMIT

Non-EU students who wish to work in Spain and have a job offer may do so by means of applying for a work permit.

When contracted by the CED, or for further information, please contact:

Soco Sancho

📍 Office E2/111 (Floor -1)
☎ +34 93 581 30 60 (213)
✉ ssancho@ced.uab.es

MEDICAL INSURANCE FOR NON-EU STUDENTS AND/OR RESEARCHERS

All students and researchers, as well as foreign teachers who come to a Catalan university must be covered by medical insurance.

🌐 [UAB documentation](#)

If you are from a country that is not in the European Economic Area then you are advised to ascertain whether there is a medical agreement between Social Security in your country and the Spanish system. If this is the case, you will have to obtain, through the relevant authorities in your country, the requisite document in order to gain access to the network of free public healthcare in Spain.

DATA PROTECTION

In order to comply with current regulations, when you arrive at the CED you will be required to fill in forms giving permission to use your personal data, and concerning rights to images and confidentiality of statistical data.

The forms will be provided by the Secretary's office at the CED.

PREVENTION SYSTEM

The CED has an occupational health and safety plan, and also an emergency plan.

All contracted staff must complete a programme of workplace security training.

The CED Secretary's Office will help you to plan this training.

WORKING HOURS

OFFICE HOURS

The CED Secretary's Office is open from **8 a.m. to 3 p.m.**.

Your working day can be between **8 a.m. and 8 p.m.**.

If you wish to work at weekends, please notify the Secretary's Office in advance.

WORK CALENDAR

[View calendar](#) 

YOUR PLACE OF WORK *

OFFICE

Individual or shared offices (2 places) with other research staff.

Staff: junior and senior post-doctorate research
Location: ground, first and second floors
Infrastructure: table, ergometric chair, chair, cupboard/bookshelves

DOCTORAL ROOM

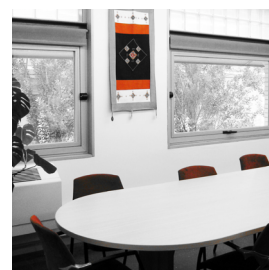
Staff: research staff on pre-doctoral visits
 Capacity: 14 people
 ☎ **+34 93 58 13 060 (212)**
Location: Floor 1
Infrastructure: individual office table, Wi-Fi, ergometric chair, books, cupboard/bookshelve

SOME RULES FOR COEXISTENCE

- Silence mobile phones.
- Avoid phone and online (for example Skype) conversations in the room.
- Avoid medium-length or long work meetings in this space (10 minutes maximum).
- Avoid group conversations, especially regarding non-academic matters.
- Don't consume food (drinks, fruit and snacks are permitted).
- Don't store perishable foods in this space.
- Keep food in the CED refrigerators.
- Listen to music at low volume with ear phones.
- Keep tables and shared spaces clean and tidy.

MEETING ROOM

Location: Floor 1
Staff: all research staff and trainees
Infrastructure: a meeting table able to seat 12, computer (55-inch screen), Internet connection
Reservations: Eulàlia Camps (management secretary)
 ☎ **+34 93 58 13 060 (229)**
 ✉ **ecamps@ced.uab.es**



ÀNGELS TORRENTS ASSEMBLY HALL

Location: Floor -1
Assembly Hall: seminars, lectures, presentation of research work
Infrastructure: capacity for a maximum of 60 people, with computer, Internet connection, projector and screen
Reservations: Soco Sancho (Training and Teaching)
 ☎ **+34 93 58 13 060 (213)**
 ✉ **ssancho@ced.uab.es**



*SEE EXTRAORDINARY MEASURES IN THE COVID-19 CONTINGENCY PLAN

THE KITCHEN, PRINTER AND PHONE CALLS*

KITCHEN AND DINING ROOM

If you wish to share your lunchtime or enjoy a quiet moment for a coffee or tea, you may use the kitchen and dining room on the second floor.

For your use: tea, biscuits, sugar, oil, coffee.




Kitchen equipment: electric jug, 2 refrigerators, 1 two-ring vitroceramic hob, 2 microwave ovens, and 1 oven. 1 capsule coffee machine. Capsule sales: CED Secretary's Office.

KITCHEN RULES

1. Cutlery, plates, glasses and cups may not be taken outside the CED.
2. Avoid accumulating cutlery, glasses and cups in offices.
3. Please wash, dry and leave in its proper place any kitchen equipment used.
4. Don't let food accumulate in the refrigerators.
5. Rubbish: please place used items in appropriate bins (organic, glass, paper and plastic). Do not leave organic waste in the bin on Friday afternoon or before long and short holidays.
6. Please clean spaces (sink, table, hot plates) after use.
7. In case of non-functioning or any problem with kitchen equipment, please advise the Secretary's Office.

PRINTERS

To print, photocopy or scan material, you may use printers located:

-  *In the library (1st floor)*
-  *In front of the Secretary's Office (ground floor)*
-  *First and second floors of the CED*

TELEPHONE CALLS

- If you wish to call another office or section of the CED, use the extension number **(3 digits)**.
- If you wish to call another office on the UAB campus, first dial 0 followed by the extension number **(0+four digits)**.
- If you wish to call an off-campus number, first dial **00** followed by the number.

*SEE EXTRAORDINARY MEASURES IN THE COVID-19 CONTINGENCY PLAN

MEDICAL CHECK-UPS, ACCOMMODATION AND PHYSICAL ACTIVITY

MEDICAL CHECKUPS OF CONTRACTED STAFF

The CED offers the option of an annual medical check-up. Please arrange your appointment with the CED Secretary's Office.

In case of time taken off work because of illness, a copy of the medical leave document must be sent to the CED Secretary's Office within three days.

LIVING NEAR THE CED

The UAB campus offers a large number of installations and services for accommodation. The University Village can accommodate up to 2,500 students, teachers, and academic and service staff.

The University Village is well situated, only ten minutes' walking distance from the CED, and offers a wide range of services and facilities.

 *University Village*

Both in Barcelona and in towns surrounding the UAB a wide variety of flats may be rented by students and research staff:

Student services (UAB):

 +34 93 581 10 21

 p.s.estudiants@uab.es

 *Experiencing the campus*

Other pages for finding accommodation near the CED or in Barcelona:

Youth housing (Generalitat de Catalunya – Government of Catalonia)

 +34 93 483 83 92

 info@habitatgejove.com

 *Youth housing*

Barcelona Housing Service for Students (BHSS)

Accommodation for foreign students and Seneca students

 *Calàbria, 147*

 +34 93 483 84 28

 info@bcn-housing-students.com

 *BHSS*

PHYSICAL ACTIVITY SERVICE (SAF)

The SAF offers to both subscribers and users of the sports facilities of the Autonomous University of Barcelona a complete, extensive range of options for engaging in physical activity.

 *Avinguda de l'Eix Central, Edifici SAF 3*

 +34 93 581 1934

 saf.usuaris@uab.cat

 *SAF*

SERVICES AND INFRASTRUCTURE ON CAMPUS



S2
S6

Stop
**Universitat
Autònoma**

Every 12 minutes

Fares



R7 + L1
R8 + 20 min

Stop
**Cerdanyola-
Universitat**

Every 30 minutes

Fares



Lines + times

Stop
**CC. Educació FTI,
FGC - Eix Central,
Esc. Postgrau - FGC**

Every 20 minutes

Fares



AP-7 exit
**d'Universitat
Autònoma**

C-58 exit: **8**
(connects with AP- 7,
direction
Lleida-Tarragona)

Googlemaps



CED

*Centre d'Estudis
Demogràfics*



CONTACT

Centre d'Estudis Demogràfics

Carrer de Ca n'Altayó, Edifici E2
Universitat Autònoma de Barcelona
08193 Bellaterra / Barcelona
SPAIN

☎ +34 93 5813060

✉ demog@ced.uab.cat

🌐 ced.uab.es

